



VICINITY MAP
NOT TO SCALE

Legend

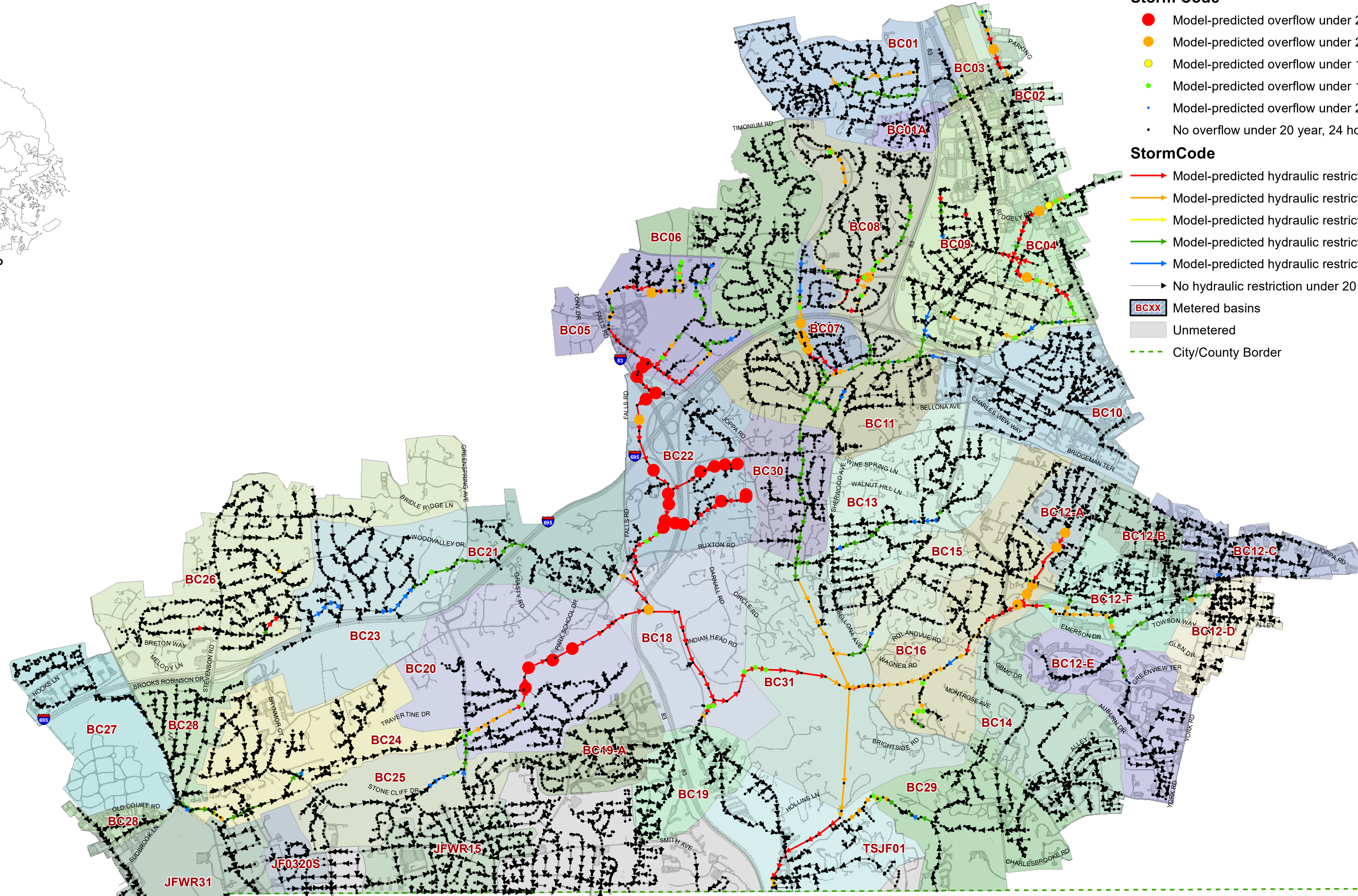
Storm Code

- Model-predicted overflow under 2 year, 6 hour storm
- Model-predicted overflow under 2 year, 24 hour storm
- Model-predicted overflow under 10 year, 6 hour storm
- Model-predicted overflow under 10 year, 24 hour storm
- Model-predicted overflow under 20 year, 24 hour storm
- No overflow under 20 year, 24 hour or less intense storms

StormCode

- Model-predicted hydraulic restriction under 2 year, 6 hour storm
- Model-predicted hydraulic restriction under 2 year, 24 hour storm
- Model-predicted hydraulic restriction under 10 year, 6 hour storm
- Model-predicted hydraulic restriction under 10 year, 24 hour storm
- Model-predicted hydraulic restriction under 20 year, 24 hour storm
- No hydraulic restriction under 20 year, 24 hour or less intense storms

- BCXX Metered basins
- Unmetered
- City/County Border



Notes:
 1) Manholes indicated as model-predicted overflows under less intense storm events are also predicted to overflow under more intense storm events.
 2) Pipes indicated as hydraulically restricted under less intense storm events are also predicted to be restricted under more intense storm events; "Hydraulic restriction" means pipe surcharged and HGL slope > pipe slope (see Appendix B).

0 500 1,000 2,000
Feet

Coordinate System:
Maryland State Plane: NAD83/91 Horizontal Datum



JONES FALLS SEWERSHED REPAIR, REPLACEMENT AND
REHABILITATION PLAN

MODEL PREDICTED SSO AND FLOW RESTRICTION LOCATIONS



Map 3

STORM SIMULATED
FUTURE CONDITIONS

Date of Map Production: April 21, 2021