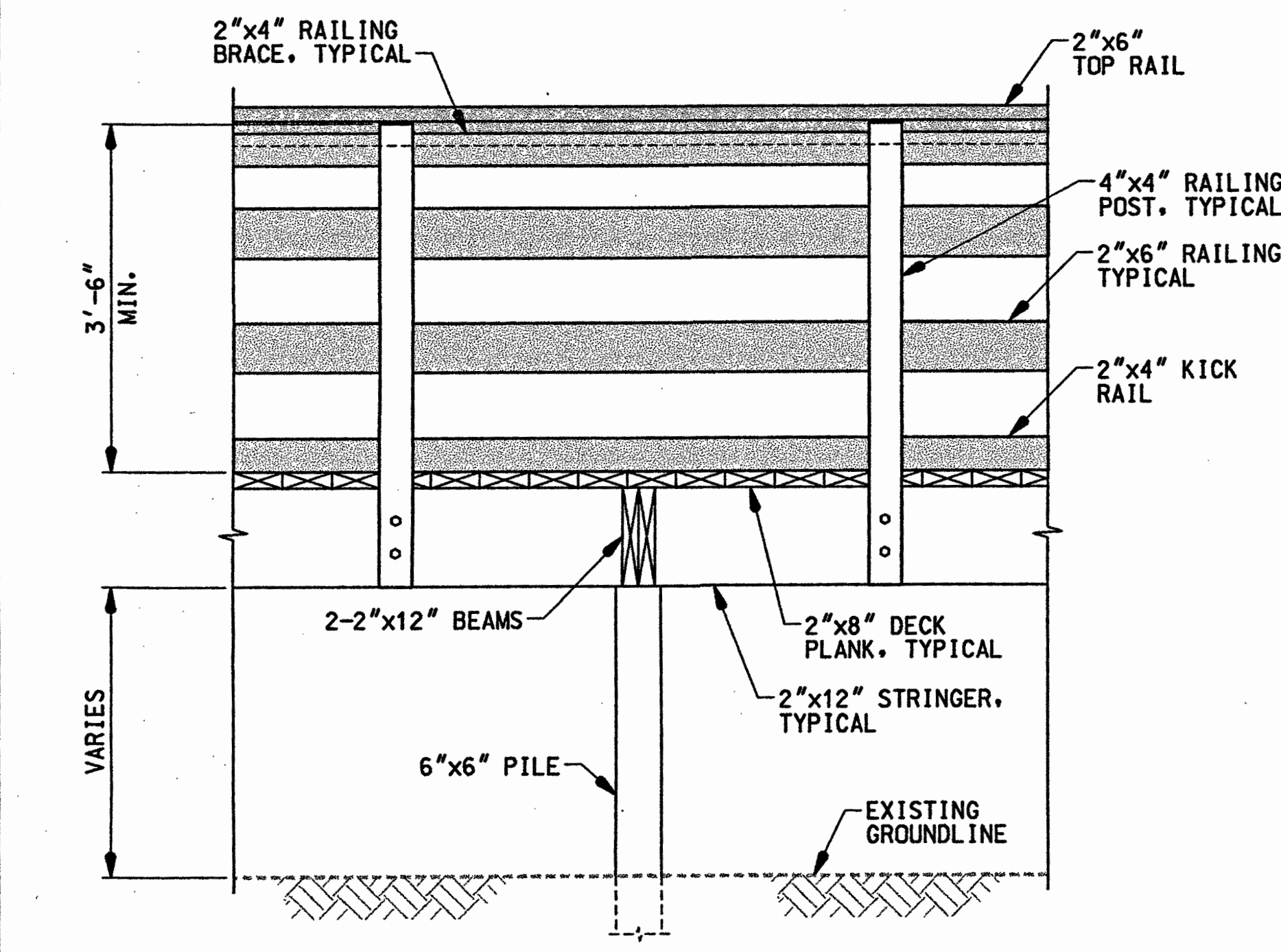
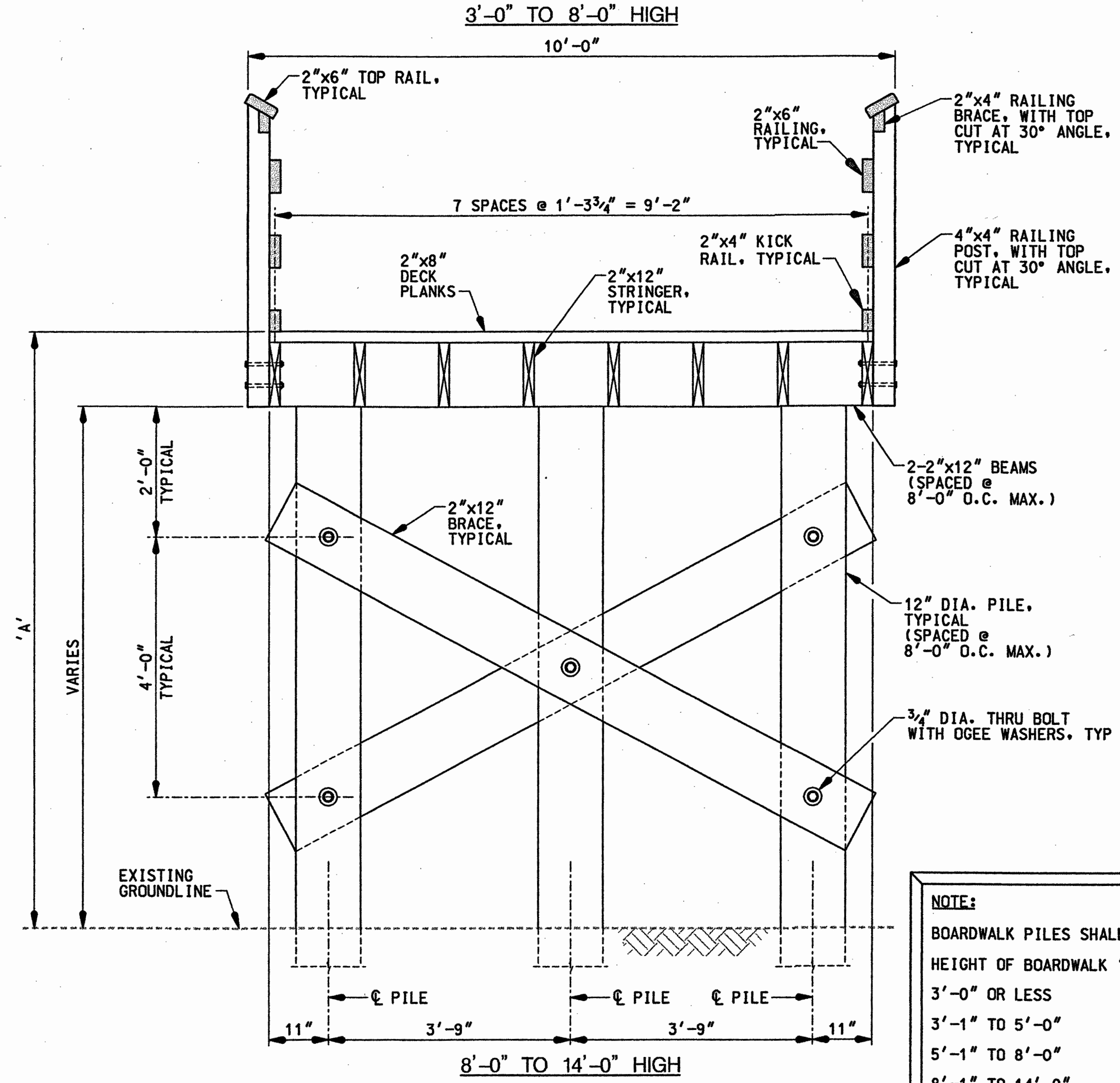
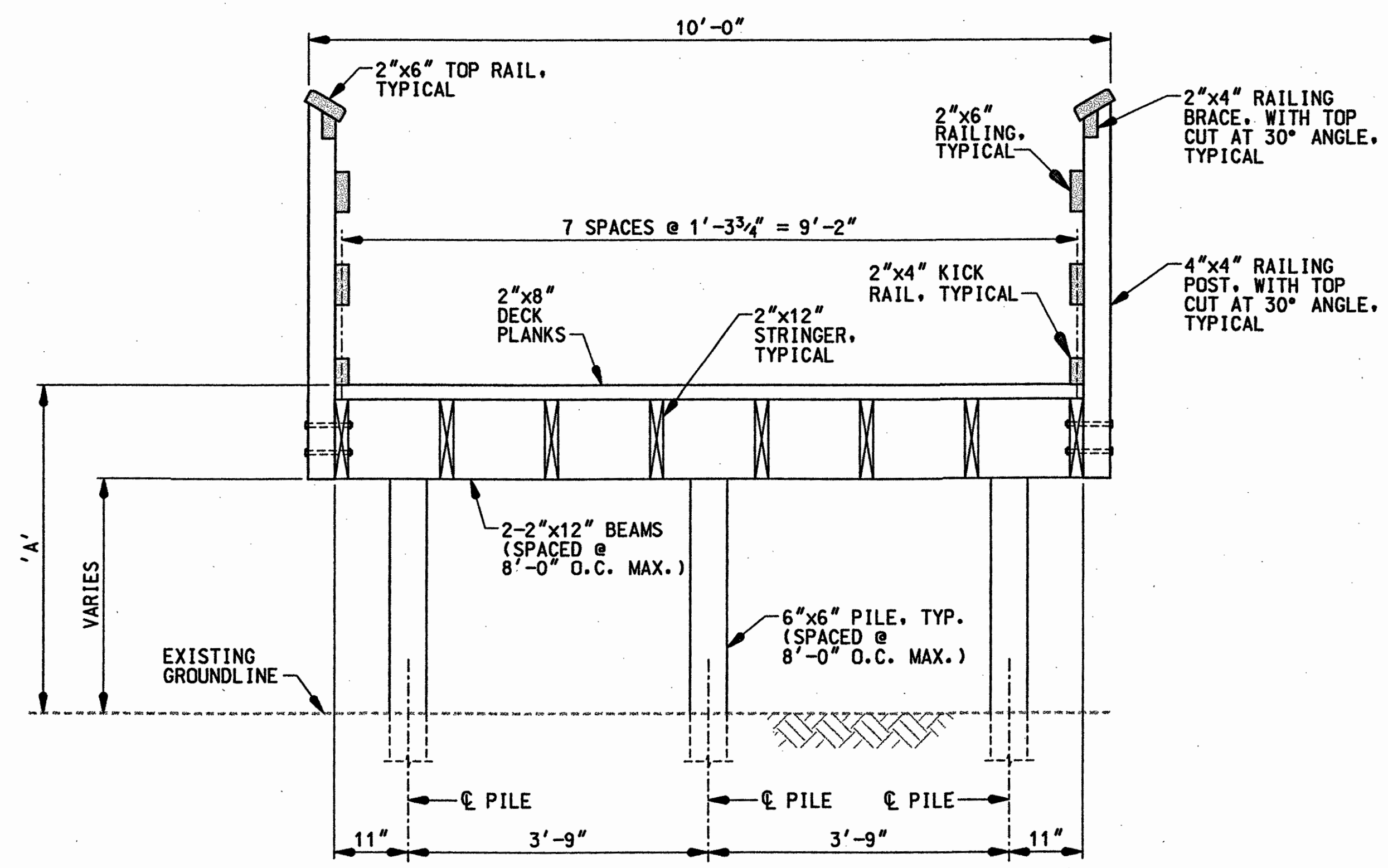


PLAN  
SCALE: 3/4" = 1'-0"



ELEVATION  
SCALE: 3/4" = 1'-0"



SECTION D-D  
SCALE: 3/4" = 1'-0"

**GENERAL NOTES:**

**SPECIFICATIONS:** BALTIMORE COUNTY STANDARD SPECIFICATIONS DATED FEBRUARY, 2000, REVISIONS THEREOF AND ADDITIONS THERETO AND SPECIAL PROVISIONS FOR MATERIALS AND CONSTRUCTION.

AASHTO STANDARD SPECIFICATIONS FOR HIGHWAY BRIDGES DATED 2002 FOR DESIGN.

**TIMBER AND LUMBER:** STRUCTURAL TIMBER AND LUMBER SHALL CONFORM TO THE DESIGN STRESSES SHOWN BELOW.

**HARDWARE:** ALL HARDWARE SHALL BE A305 STAINLESS STEEL.

**IN-STREAM RESTRICTION:** LAKE ROLAND AND ALL TRIBUTARIES OTHER THAN THE JONES FALLS RIVER ARE USE CLASS I WATERS. STREAM WORK SHALL NOT BE CONDUCTED DURING THE PERIOD MARCH 1 THROUGH JUNE 15 FOR USE CLASS I WATERS INCLUSIVE, DURING ANY YEAR.

THE JONES FALLS RIVER AND ALL TRIBUTARIES BELOW LAKE ROLAND DAM ARE USE CLASS IV TROUT WATERS. IN-STREAM WORK SHALL NOT BE CONDUCTED DURING THE PERIOD MARCH 1 THROUGH MAY 31 FOR USE CLASS IV TROUT WATERS INCLUSIVE, DURING ANY YEAR.

- NOTES:**
- DESIGN STRESSES FOR TIMBER SHALL CONFORM TO THE FOLLOWING MINIMUM ALLOWABLE DRY UNIT STRESSES, EXCEPT AS NOTED:
    - TREATED TIMBER PILES SHALL BE SOUTHERN PINE - NO. 1. VALUES FOR WET CONDITIONS OF USE:
      - COMPRESSION (F<sub>c</sub>) = 825 PSI
      - BENDING (F<sub>b</sub>) = 1350 PSI
      - HORIZONTAL SHEAR (F<sub>v</sub>) = 110 PSI
      - MODULUS OF ELASTICITY (E) = 1.5E6 PSI
    - VALUES FOR TREATED TRANSVERSE DECK PANELS SHALL BE SOUTHERN PINE - NO. 2:
      - COMPRESSION (F<sub>c</sub>) = 1550 PSI
      - BENDING (F<sub>b</sub>) = 1200 PSI
      - HORIZONTAL SHEAR (F<sub>v</sub>) = 90 PSI
      - ELASTIC MODULUS (E) = 1.6E6 PSI
    - VALUES FOR TREATED TIMBER KICK RAIL SHALL BE SOUTHERN PINE - NO. 2:
      - COMPRESSION (F<sub>c</sub>) = 1650 PSI
      - BENDING (F<sub>b</sub>) = 1500 PSI
      - HORIZONTAL SHEAR (F<sub>v</sub>) = 90 PSI
      - ELASTIC MODULUS (E) = 1.6E6 PSI
    - VALUES FOR TREATED TIMBER RAILING POST SHALL BE SOUTHERN PINE - NO. 1:
      - COMPRESSION (F<sub>c</sub>) = 1850 PSI
      - BENDING (F<sub>b</sub>) = 1850 PSI
      - HORIZONTAL SHEAR (F<sub>v</sub>) = 100 PSI
      - ELASTIC MODULUS (E) = 1.7E6 PSI
    - VALUES FOR TREATED TIMBER STRINGERS AND TIMBER BEAMS SHALL BE SOUTHERN PINE - NO. 1:
      - COMPRESSION (F<sub>c</sub>) = 1600 PSI
      - BENDING (F<sub>b</sub>) = 1250 PSI
      - HORIZONTAL SHEAR (F<sub>v</sub>) = 90 PSI
      - ELASTIC MODULUS (E) = 1.7E6 PSI
    - VALUES FOR TREATED TIMBER RAILING SHALL BE SOUTHERN PINE - NO. 2:
      - COMPRESSION (F<sub>c</sub>) = 1600 PSI
      - BENDING (F<sub>b</sub>) = 1250 PSI
      - HORIZONTAL SHEAR (F<sub>v</sub>) = 90 PSI
      - ELASTIC MODULUS (E) = 1.6E6 PSI
  - MINIMUM MICRONIZED COPPER AZOLE (MCA) PRESERVATIVE TREATMENT RETENTION SHALL BE 0.40 PCF FOR ALL TIMBER AND LUMBER MATERIALS EXCEPT PILES.
  - MINIMUM COPPER CHROME ARSENATE (CCA) PRESERVATIVE TREATMENT RETENTION SHALL BE 0.80 PCF FOR PILES.
  - IF THE ESTIMATED TIP ELEVATION IS NOT REACHED, THE ENGINEER SHALL BE NOTIFIED.
  - THE CONTRACTOR SHALL BE EQUIPPED AND PREPARED TO AUGER THROUGH DENSE LAYERS TO ACHIEVE THE REQUIRED MINIMUM TIP ELEVATION, AS DIRECTED BY THE ENGINEER.
  - AREA BETWEEN POST AND EDGE OF AUGER HOLE SHALL BE FILLED WITH DRY, COMMERCIAL BAGGED CONCRETE TO WITHIN 6 INCHES OF THE GROUND SURFACE. NATIVE SOIL SHALL BE PLACED ON TOP AND HAND TAMPED. COST OF CONCRETE SHALL BE INCIDENTAL TO THE S.F. UNIT COST OF BOARDWALK WITH HANDRAILS.
  - ALL FIELD CUTS AND BORE HOLES SHALL BE FIELD TREATED WITH COPPER NAPHTHATE.
  - DIMENSIONS FOR TIMBER ARE GIVEN AS NOMINAL DIMENSIONS. ACTUAL DIMENSIONS MAY BE A MAXIMUM OF 1/2" LESS THAN THE STATED NOMINAL DIMENSIONS DEPENDING ON MATERIAL SURFACING.

**NOTE:**

BOARDWALK PILES SHALL BE EMBEDDED AS FOLLOWS:

HEIGHT OF BOARDWALK 'A'	MINIMUM EMBEDMENT	MINIMUM PILE SIZE
3'-0" OR LESS	6'-0"	6" x 6"
3'-1" TO 5'-0"	8'-0"	6" x 6"
5'-1" TO 8'-0"	10'-0"	6" x 6"
8'-1" TO 14'-0"	16'-0"	12" DIA.

**NOTE:**  
FOR CONNECTION DETAILS, SEE SHEET SS-03.

WALLACE, MONTGOMERY & ASSOCIATES, LLP  
CIVIL AND STRUCTURAL ENGINEERS

Human & Rohde, Inc.  
Landscape Architects & Land Planners

AS-BUILT PER RECORD PRINT		REVISION	DATE	BY	P. W. A. NO.	KEY SHEETS	POSITION SHEETS	DRAWING SCALE	PROPERTY MANAGEMENT
DRAFTSMAN	DATE					0-SE		PLAN: AS SHOWN	APPROVED
								PROFILE: HOR. = N/A	MANAGER
								VERT. = N/A	DATE
WALLACE, MONTGOMERY & ASSOC.		BUREAU OF ENGINEERING AND CONSTRUCTION	BUILDINGS	HIGHWAYS	STRUCTURES	STORM DRAINS	SEWER	WATER	FIELD ENGINEER
ENGINEER: JOHN P. KEENAN	DSON BY: E.S.B.	REVIEWED							DEPARTMENT OF RECREATION & PARKS
DATE: LIC. NO.: 99910	DWN BY: C.G.A.	DATE							APPROVED
	CHD BY: J.P.K.								DIRECTOR

BALTIMORE COUNTY DEPARTMENT OF PUBLIC WORKS BUREAU OF ENGINEERING & CONSTRUCTION

ROBERT E. LEE PARK

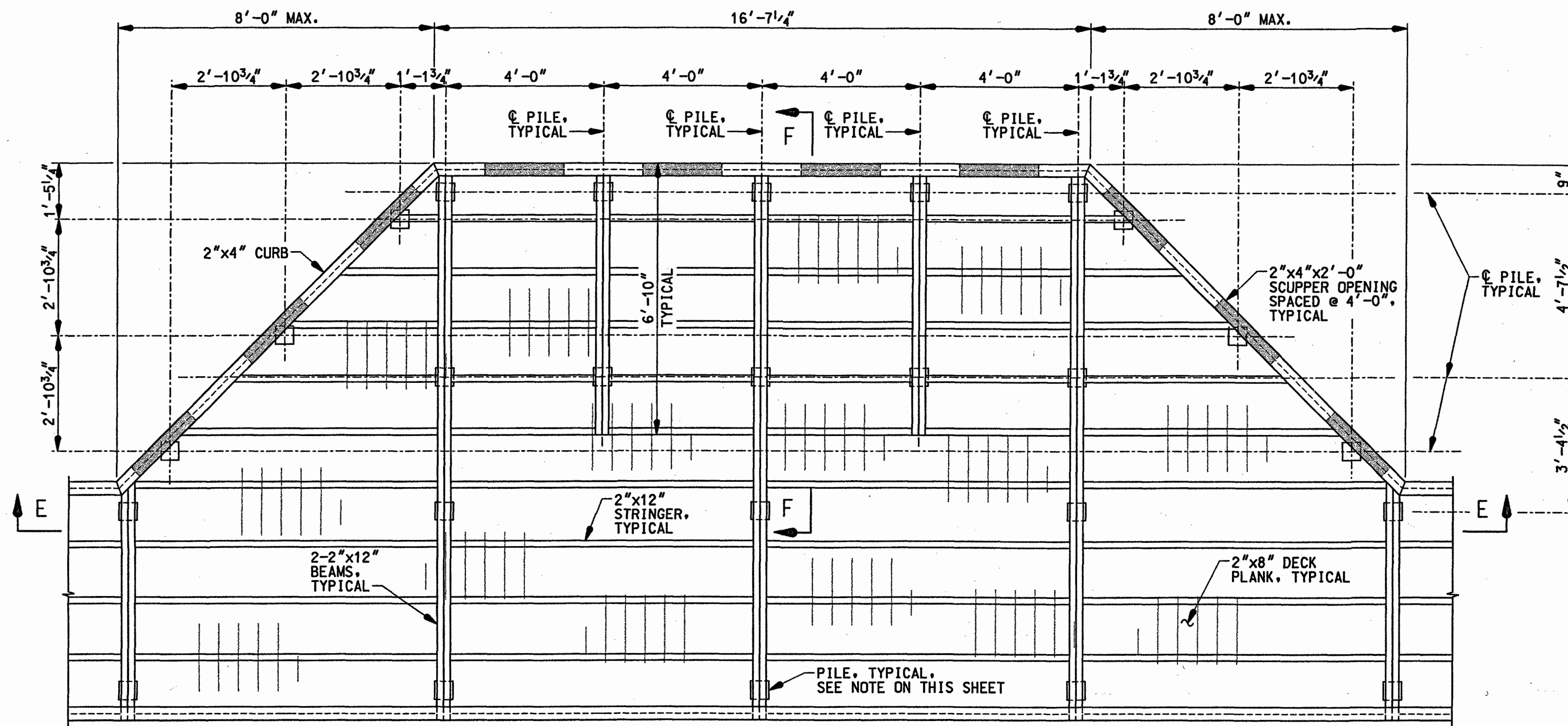
BOARDWALK PLAN, ELEVATION, AND SECTION

SUBDIVISION: LAKE ROLAND

ELECT. DISTRICT NO. 9C2

SHEET DESIGNATION	CONTRACT NO.
SS-01 OF 03	10039 GX0
JOB ORDER NO.	
242-212-0012-A001	
SHEET 38 OF 39	
DRAWING NO.	
2010-0684	
FILE NO. 6	

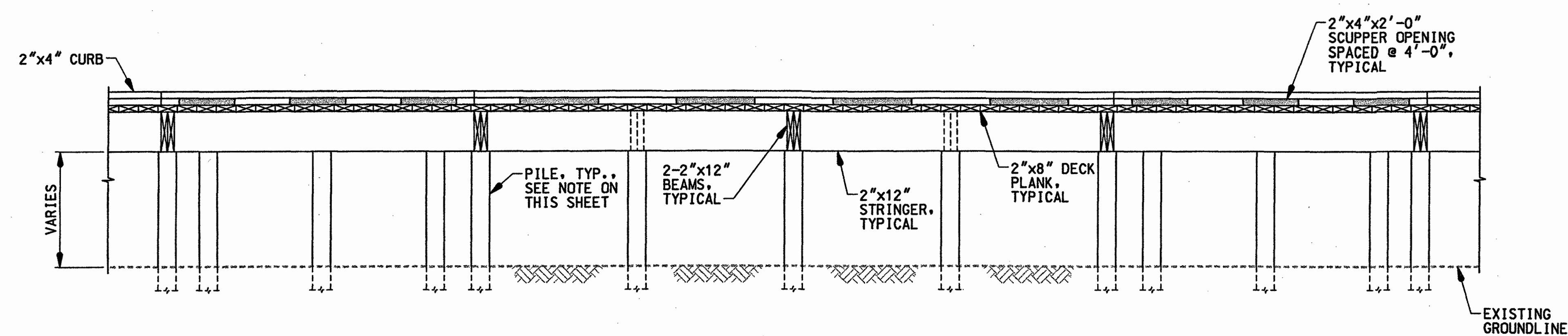




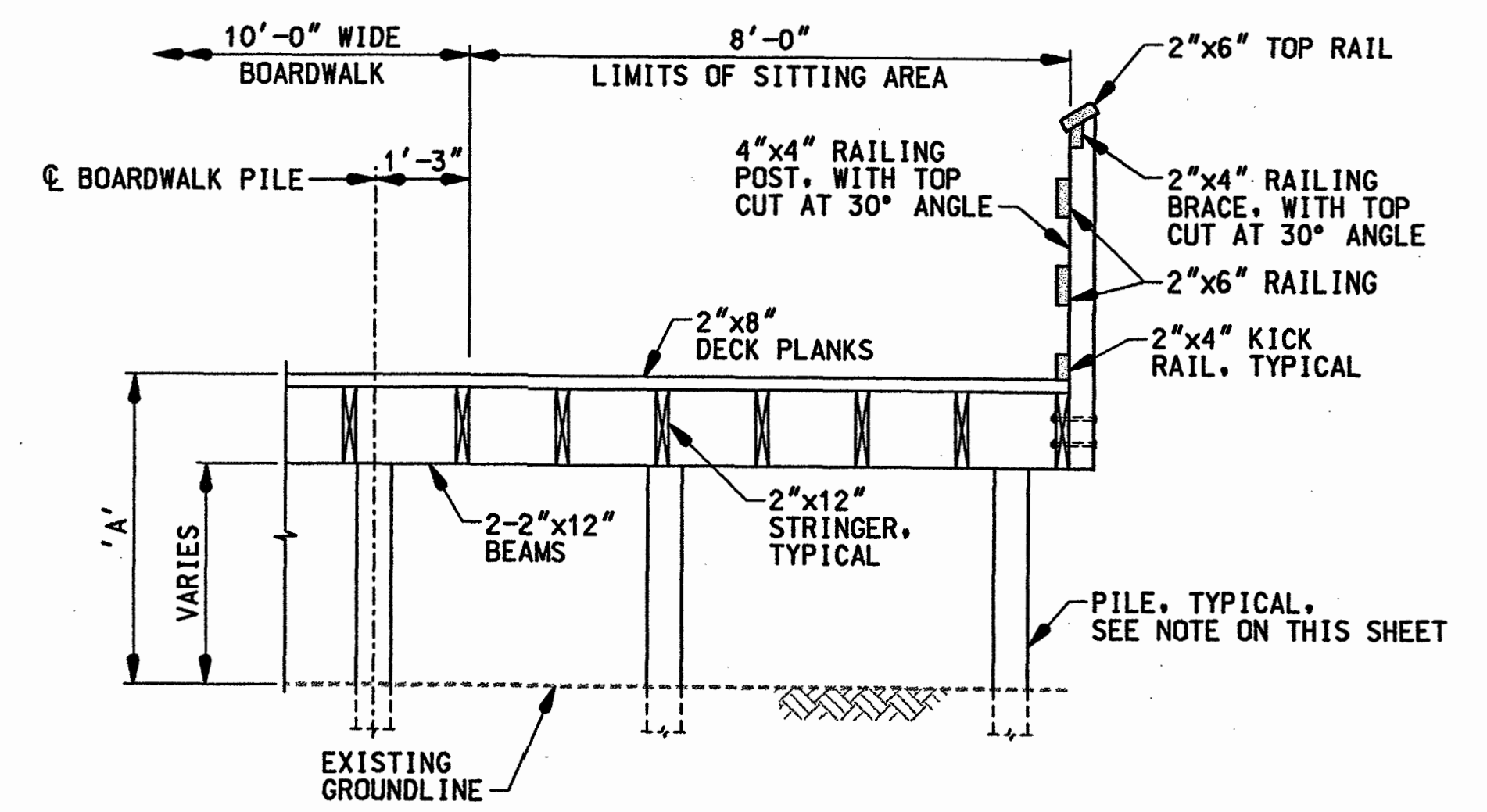
PLAN  
SCALE: 1/2" = 1'-0"

**NOTE:**  
BOARDWALK PILES SHALL BE EMBEDDED AS FOLLOWS:

HEIGHT OF BOARDWALK 'A'	MINIMUM EMBEDMENT	MINIMUM PILE SIZE
3'-0" OR LESS	6'-0"	6" x 6"
3'-1" TO 5'-0"	8'-0"	6" x 6"
5'-1" TO 8'-0"	10'-0"	6" x 6"
8'-1" TO 14'-0"	16'-0"	12" DIA.



SECTION E-E  
SCALE: 1/2" = 1'-0"



SECTION F-F  
SCALE: 1/2" = 1'-0"

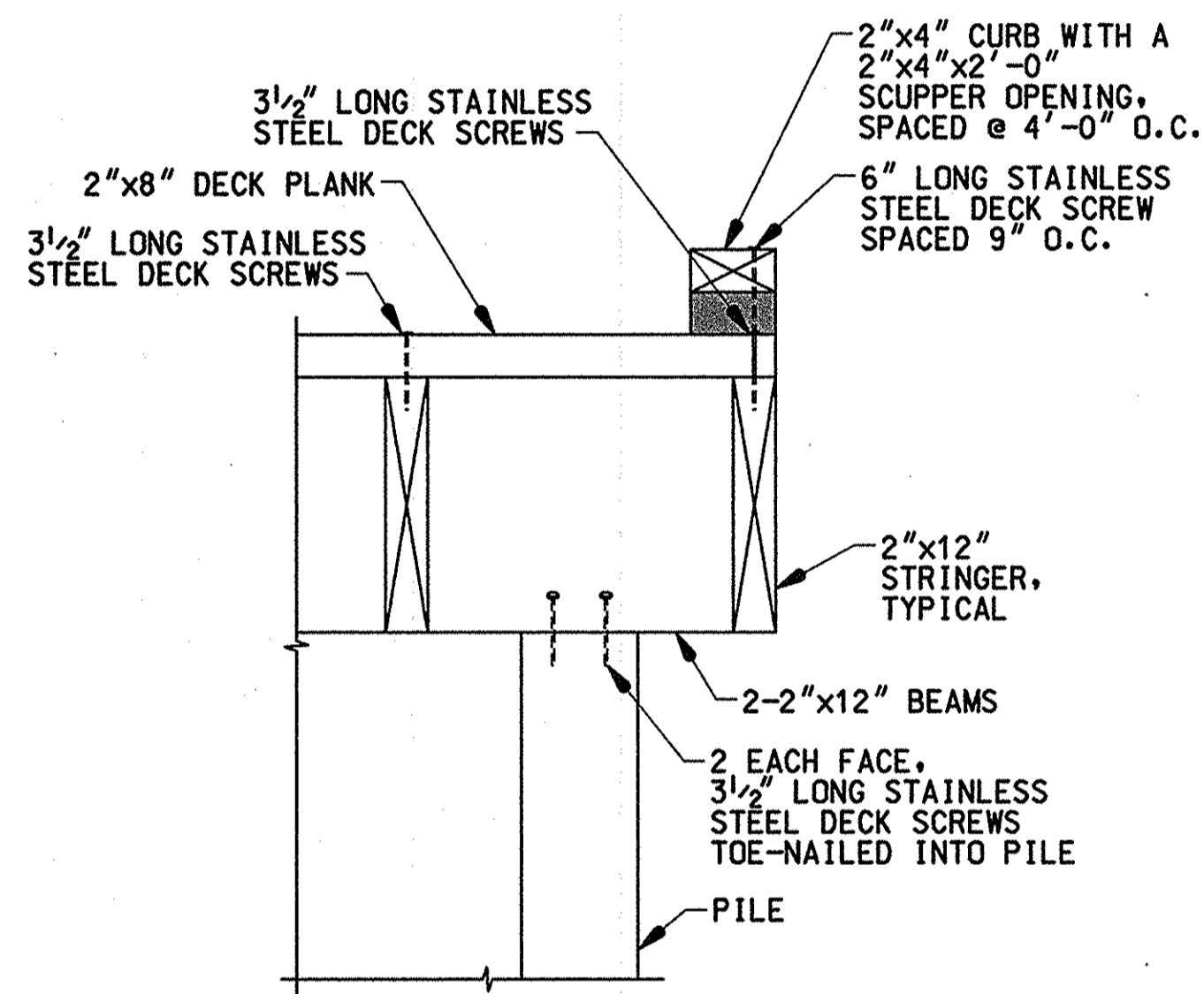
**NOTE:**  
FOR CONNECTION DETAILS, SEE SHEET SS-03.

WALLACE, MONTGOMERY & ASSOCIATES, LLP  
 CIVIL AND STRUCTURAL ENGINEERS  
 Human & Rohde, Inc.  
 Landscape Architects & Land Planners

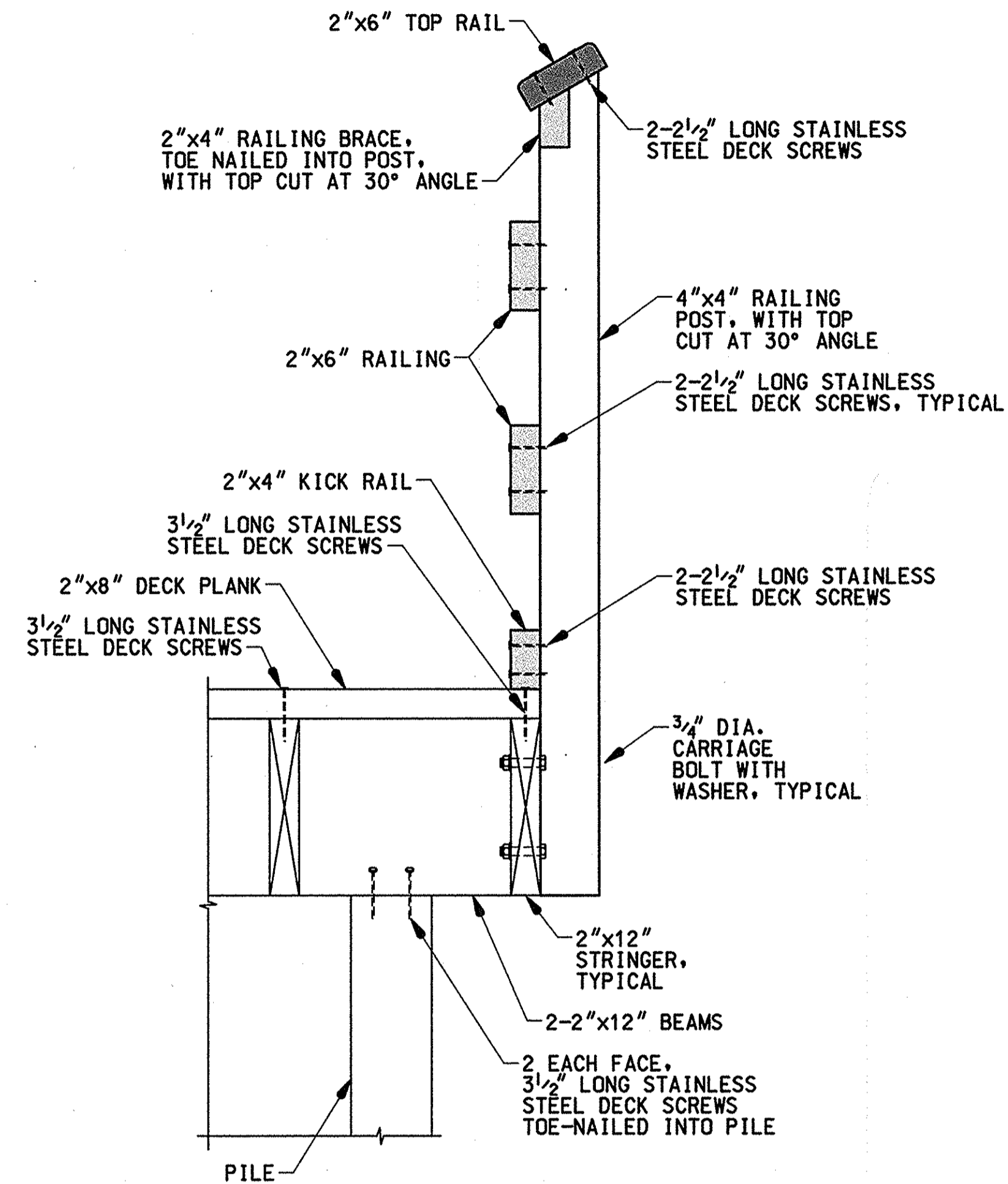
AS-BUILT PER RECORD PRINT		REVISION	DATE	BY	P. W. A. NO.	KEY SHEETS	POSITION SHEETS	DRAWING SCALE	PROPERTY MANAGEMENT
DRAFTSMAN	DATE					0-SE		PLAN: AS SHOWN	APPROVED: _____ MANAGER
								PROFILE: HOR. = N/A VERT. = N/A	DATE: _____
WALLACE, MONTGOMERY & ASSOC.		DESIGN BY: E.S.B.	BUREAU OF ENGINEERING AND CONSTRUCTION		BUILDINGS	HIGHWAYS	STRUCTURES	STORM DRAINS	SEWER
ENGINEER: JOHN F. KEEMAN	DWN BY: C.G.A.	REVIEWED							DEPARTMENT OF RECREATION & PARKS
DATE: _____	LIC. NO.: 28910	CHKD BY: J.P.K.	DATE						APPROVED: _____ DIRECTOR

BALTIMORE COUNTY DEPARTMENT OF PUBLIC WORKS BUREAU OF ENGINEERING & CONSTRUCTION  
 ROBERT E. LEE PARK  
 SUBDIVISION: LAKE ROLAND  
 SITTING AREA PLAN, ELEVATION, AND SECTIONS  
 ELECT. DISTRICT NO. 9C2  
 BALTIMORE COUNTY TYPE NUMBER

SHEET DESIGNATION	CONTRACT NO.
SS-02 OF 03	10039 GXO
	242-212-0012-A001
SHEET 37 OF 39	
DRAWING NO.	
2010-0685	
FILE NO. 5	



TYPICAL CURB CONNECTION DETAIL  
SCALE: 1 1/2"=1'-0"



RAILING CONNECTION DETAIL  
SCALE: 1 1/2"=1'-0"

NOTE:  
CONNECT ALL STRINGERS TO BEAMS  
WITH JOIST HANGERS.

WALLACE, MONTGOMERY & ASSOCIATES, LLP  
CIVIL AND STRUCTURAL ENGINEERS  
**Human & Rohde, Inc.**  
Landscape Architects & Land Planners

A JOINT VENTURE

AS-BUILT PER RECORD PRINT	REVISION	DATE	BY	P. W. A. NO.	KEY SHEETS	POSITION SHEETS	DRAWING SCALE	PROPERTY MANAGEMENT		
DRAFTSMAN					0-SE		PLAN : AS SHOWN PROFILE : HOR. = N/A VERT. = N/A	APPROVED _____ MANAGER		
								DATE _____		
WALLACE, MONTGOMERY & ASSOC.	DSON BY: E.S.R.	BUREAU OF ENGINEERING AND CONSTRUCTION	BUILDINGS	HIGHWAYS	STRUCTURES	STORM DRAINS	SEWER	WATER	FIELD ENGINEER	DEPARTMENT OF RECREATION & PARKS
ENGINEER: JOHN P. KEENAN	DWN BY: C.G.A.	REVIEWED								APPROVED _____ DIRECTOR
DATE: 1/11/12 LIC. NO.: 29910	CHKD BY: J.P.K.	DATE								DATE _____

BALTIMORE COUNTY DEPARTMENT OF PUBLIC WORKS BUREAU OF ENGINEERING & CONSTRUCTION

ROBERT E. LEE PARK

MISCELLANEOUS CONNECTION DETAILS

SUBDIVISION: LAKE ROLAND

ELECT. DISTRICT NO. 9C2

SHEET DESIGNATION	CONTRACT NO.
SS-03 OF 03	10039 GXO
	JOB ORDER NO.
	242-212-0012-A001
	SHEET 38 OF 39
	DRAWING NO.
	2010-0686
	FILE NO. 5

SCANNED

